

Mathematics 2260H – Geometry I: Euclidean Geometry

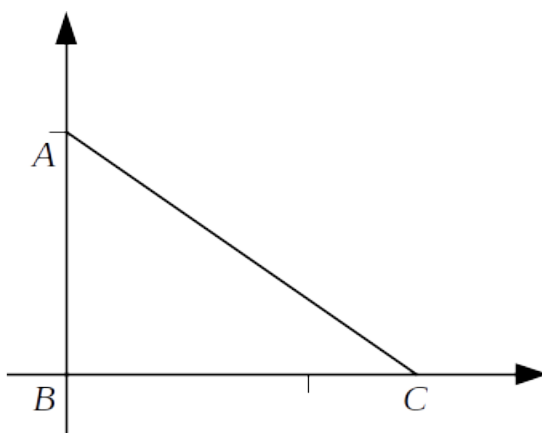
TRENT UNIVERSITY, Winter 2025

Assignment #10

A Special Triangle

Due on Friday, 28 April.

Let $A = (0, 1)$, $B = (0, 0)$, and $C = (\sqrt{2}, 0)$ be the vertices of $\triangle ABC$ in the Cartesian plane.



1. Find the coordinates of G (the centroid), H (the orthocentre), I (the incentre), N (the centre of the nine-point circle), and O (the circumcentre), of $\triangle ABC$. [5]
2. Find the coordinates of the point at which the incircle and the nine-point circle of $\triangle ABC$ are tangent to each other. [3]
3. The Euler line of $\triangle ABC$ has special relationships with two of the triangle's medians. What are these relationships? [2]