

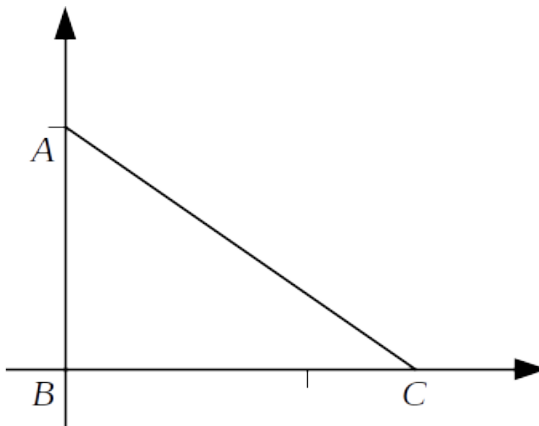
**Mathematics 2260H – Geometry I: Euclidean Geometry**

TRENT UNIVERSITY, Winter 2023

**Assignment #11 – A Special Triangle**

*Due on Thursday, 6 April.*

Let  $A = (0, 1)$ ,  $B = (0, 0)$ , and  $C = (\sqrt{2}, 0)$  be the vertices of  $\triangle ABC$  in the Cartesian plane.



1. Find the coordinates of  $G$  (the centroid),  $H$  (the orthocentre),  $I$  (the incentre),  $N$  (the centre of the nine-point circle), and  $O$  (the circumcentre), of  $\triangle ABC$ . [5]
2. Find the coordinates of the point at which the incircle and the nine-point circle of  $\triangle ABC$  are tangent to each other. [3]
3. The Euler line of  $\triangle ABC$  has special relationships with two of the triangle's medians. What are these relationships? [2]